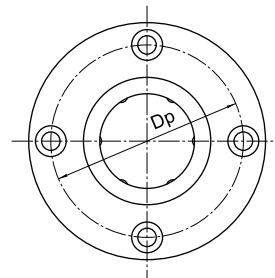
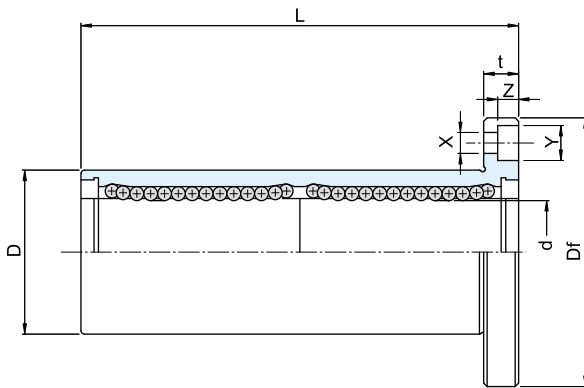
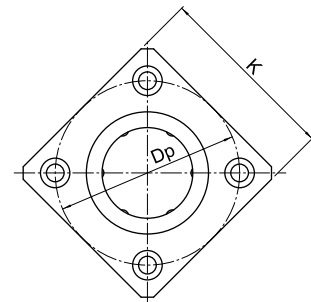


## Hiwin JBFL&JBKL Series: Metric Dimension Series



**JBFL TYPE**



**JBKL TYPE**

Shaft Diameter d mm	Model		Major Dimensions and Tolerance														Load Capacity		
	JBFL Type	JBKL Type	d mm	Tolerance $\mu\text{m}$	D mm	Tolerance $\mu\text{m}$	L mm	Tolerance $\mu\text{m}$	Df mm	K mm	t mm	Dp mm	X mm	Y mm	Z mm	Concentricity $\mu\text{m}$	Perpendicularity $\mu\text{m}$	Basic Dynamic Load Rating C(d)	Basic Static Load Rating Co(d)
8	JBFL-08A	JBKL-08A	8	0 -9	15	0 -11	45	$\pm 300$	32	25	5	24	3.5	6	3.1	12	12	441	804
10	JBFL-10A	JBKL-10A	10		19	0 -13	55		0 -200	40	30	6	29	4.5	7.5			4.1	608
12	JBFL-12A	JBKL-12A	12		21		57	42		32	6	32	4.5	7.5	4.4			823	1588
16	JBFL-16A	JBKL-16A	16		28		70	48		37	6	38	4.5	7.5	4.1			1245	2352
20	JBFL-20A	JBKL-20A	20	0 -10	32	0 -16	80	0 -300	54	42	8	43	5.5	9	5.1	15	15	1401	2764
25	JBFL-25A	JBKL-25A	25		40		112		62	50	8	51	5.5	9	5.1			1558	3136
30	JBFL-30A	JBKL-30A	30		45		123		74	58	10	60	6.6	11	6.1			2450	5488
35	JBFL-35A	JBKL-35A	35		52		135		82	64	10	67	6.6	11	6.1			2646	6272
40	JBFL-40A	JBKL-40A	40	0 -12	60	0 -19	151	20	96	75	13	78	9	14	8.1	20	20	3479	8232

**Note:** 1. Linear bearing with single side wiper (JBFL/JBKL.....W) or with double side wiper (JBF/JBK.....WW) are available.  
 2. 1 Kg $\approx$ 9.81 N $\approx$ 2.2046 Lbf